



**SCL PIPELINE**

# A WORKING GUIDE

**Operated by Shell Canada's Sarnia Manufacturing Centre**

# What is the SCL Pipeline

The SCL Pipeline is used to transport liquefied gas (butane) from the Marysville Underground Storage Terminal located at Marysville, Michigan, to storage spheres at Shell's Manufacturing Centre in Corunna, Ontario. SCL Pipeline crosses underneath the St. Clair River and, because it crosses the international boundary between the United States and Canada, is under the jurisdiction of the National Energy Board (NEB) for its Canadian portion.

SCL Pipeline was built in 1989 and is comprised of a single pipe bundle containing four individual pipelines (Pipelines "A", "B", "C" and "D"). Fabricated in advance of its underground installation, this single pipe bundle was pulled backwards by a boring machine situated on the Michigan side of the St. Clair River. The bored line is at a depth approximately 12 meters (40 feet) below the river's bottom and has a length of 900 meters (3,000 feet). The total pipeline volume (if all four pipelines were filled) is approximately 100 m<sup>3</sup> (629 barrels).

Currently Pipeline "A" is actively used to transport butane. Pipeline "B", which had been used for propane in the past, has been de-inventoried, depressurized, and removed from service. Since the original installation in 1989, Pipelines "C" and "D" have remained capped. SCL owns the portion of the line from Shell Manufacturing Centre in Corunna, Ontario, (also known as the Sarnia Manufacturing Centre) to the Canadian border. The pipeline is run and maintained by Sarnia Manufacturing Centre Operations.

## OUR COMMITMENT TO SAFETY

Shell Canada's Sarnia Manufacturing Centre is committed to:

- Pursuing the goal of no harm to people.
- Protecting the environment and pursuing the goal of prevention of pollution.
- Playing a leading role in promoting best practice in our industry.
- Managing health, safety and sustainable development.

## Our Responsibility as a Pipeline Operator

### Emergency Preparedness and Response

As a National Energy Board-regulated pipeline, SCL Pipeline, operated by Shell Manufacturing Centre in Corunna, Ontario, has an Emergency Management System and an Emergency Response Plan in place to ensure preparedness for the unlikely event of a pipeline incident.

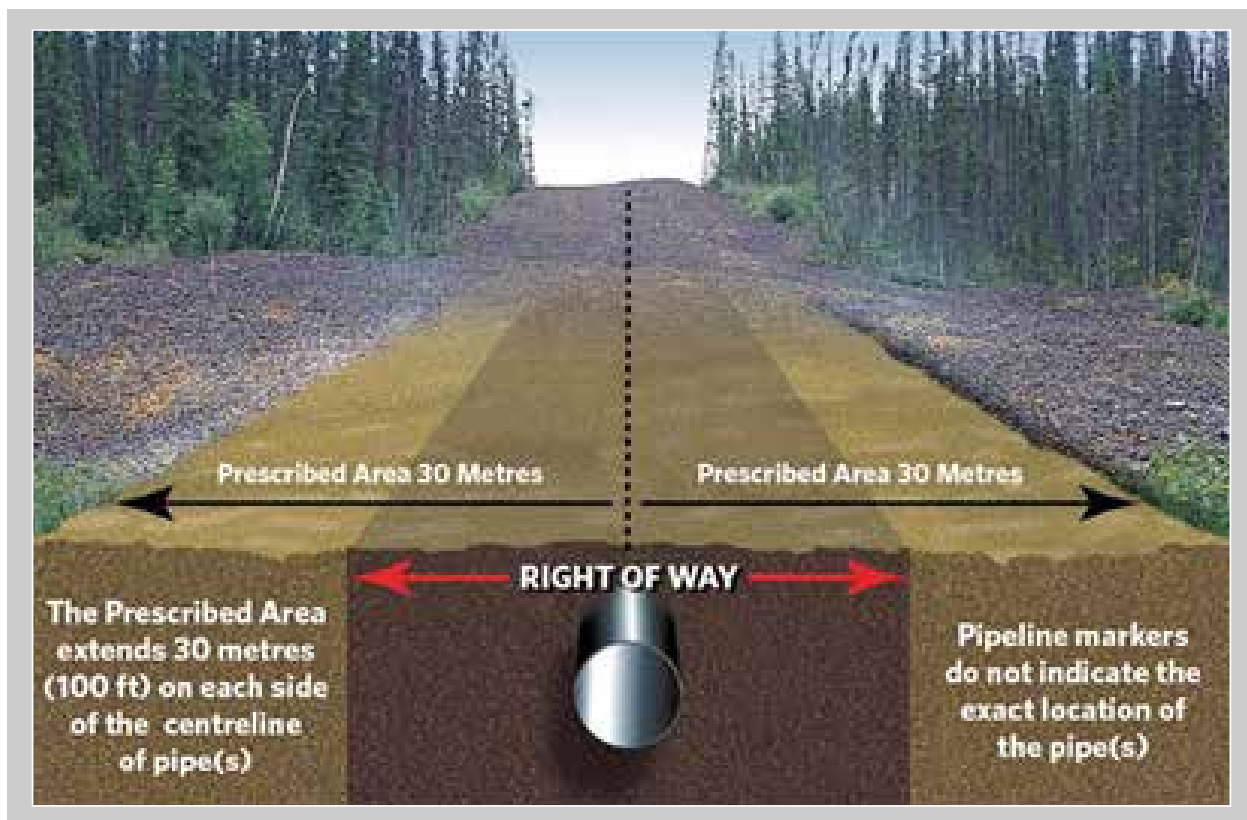
Specific to the SCL Pipeline, SMC has prepared for emergency scenarios by:

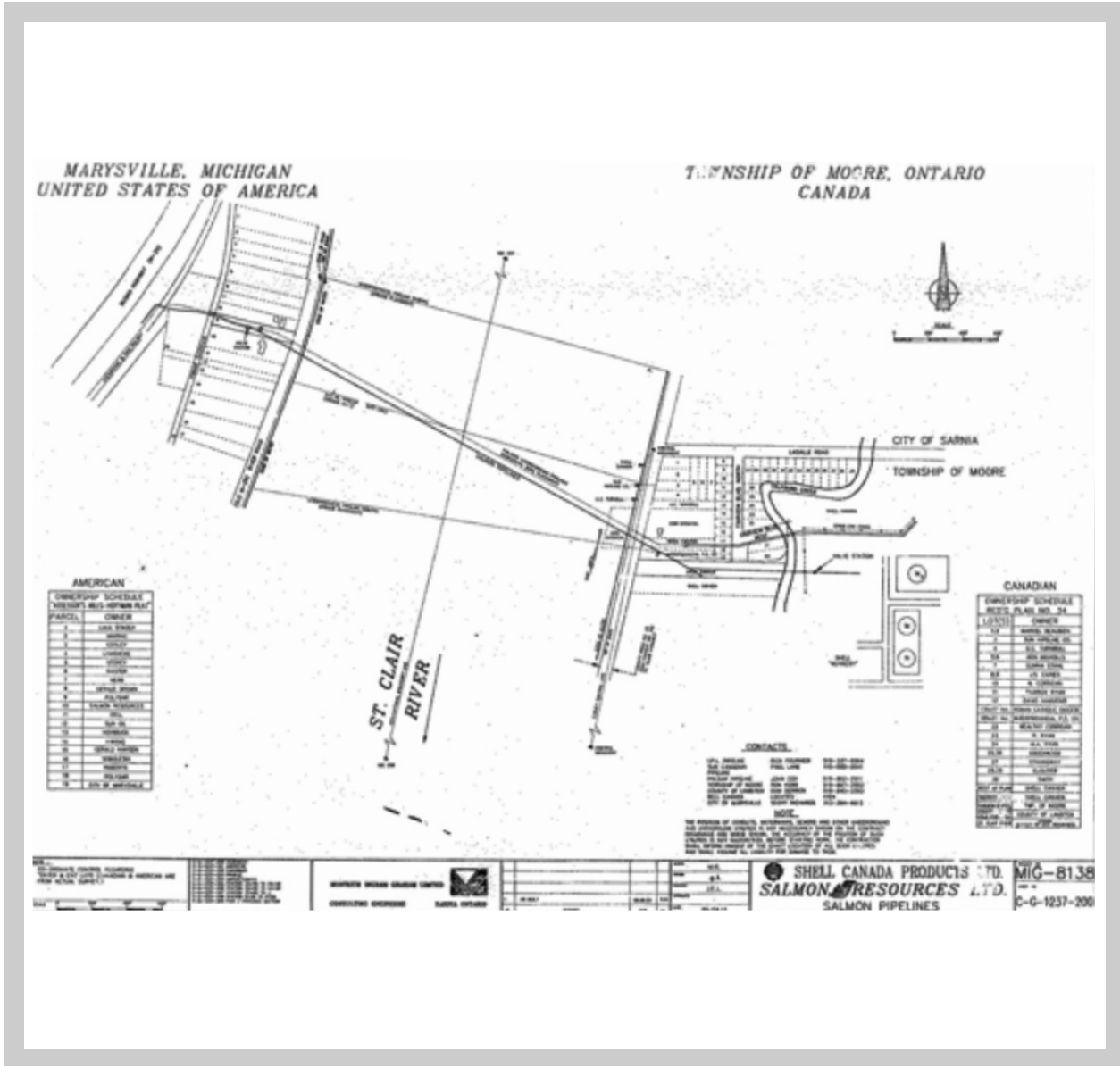
- Being a member of the Chemical Valley Emergency coordinating Organization (CVECO)
- Having mutual aid support from nearby oil, gas, and chemical companies, and nearby municipalities
- Having an extended inventory of equipment on site and available through mutual aid
- Being a member of the East Coast Response Corporation

SMC conducts regularly scheduled emergency training exercises and drills to test and confirm emergency response capabilities and to drive continual emergency preparedness improvements.

# How to Work Safely Near the Pipeline

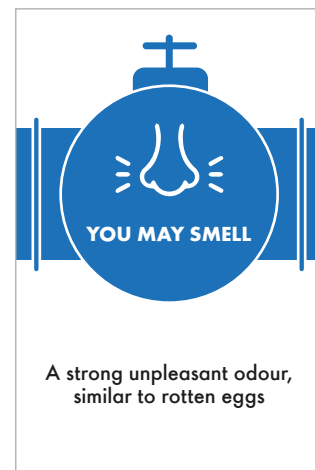
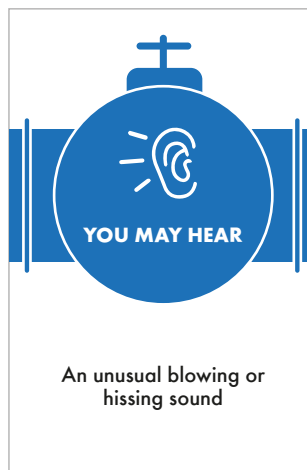
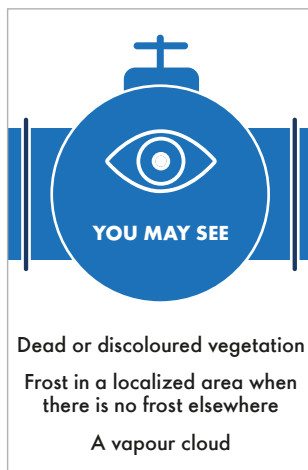
1. Know where the pipeline is (see map on page 4)
2. Consent from the pipeline company is required for:
  - Construction of a facility across, on, along, or under a pipeline (including the right of way);
  - Ground disturbance activities in the prescribed area, which extends 30 metres (100 feet) from each side of the centre line of the pipe; and
  - Operation of a vehicle or mobile equipment across a right of way, outside the travelled portion of a highway





# How to Recognize a Pipeline Leak

Butane has only a faint odour and small quantities cannot be reliably detected by smell. A small butane leak is not usually a serious hazard in open air but can become a serious hazard if the vapour can collect in a confined space and mix with air. A small butane leak is usually detected from reports of discoloured or dying vegetation or frost forming at the leak location over the pipeline. A small to medium sized leak of butane will be detected by killed vegetation and frost at the leak location. Condensed water vapour surrounding the butane vapour may also be visible.



## What to do in a Pipeline Emergency

### DO:



- Leave the area immediately - if possible travel uphill and/or in an upwind direction
- Warn others to also leave or stay away
- Call 911 from a landline or, if far enough away (1/4 mile or further) via cell phone
- Call Shell's local Emergency Response line at 519-862-2822
- Follow instructions given to you by emergency responders

### DO NOT:



- Touch or go near any liquid or vapour that may have come from the pipeline
- Re-enter the area
- Drive into the area or start your car in close proximity to the leak
- Use anything that may cause a spark (anything powered by a battery, electricity, or natural gas)
- Attempt to operate any pipeline valves
- Attempt to extinguish any fire

# How to Obtain Consent from the Pipeline Company

Written consent must be obtained to construct a facility on, along, across, or under the SCL pipeline, and for persons planning to engage in an activity causing a ground disturbance.

1. Contact the pipeline company for a copy of their technical guidelines, which set out the information you need to include in your application to the pipeline company.
2. Prepare your request for consent following the pipeline company's guidelines.
3. If you have any questions pertaining to your project, contact the pipeline company before you submit your request for consent. They will discuss your project with you and, if necessary, provide assistance.
4. Submit your request for consent to the pipeline company.

Within ten working days of receiving your request, the pipeline company must either give you its consent or provide reasons for denying it. [If consent is denied, you may apply to the NEB for a review of your request under the NEB Act \(section 112\) and the DPR - Authorizations \(section 14\).](#)

If you decide to change the design, location, or type of facilities to be constructed after the pipeline company gives its consent, the pipeline company must agree to the changes before you start your work.

## FOR ADDITIONAL INFORMATION ON

- Guidance for working near our pipeline
- Design and construction guidelines for third-party activities in proximity to or crossing the SCL pipeline and right-of-way
- Crossing/Proximity information forms
- How to fill out a Crossing/Proximity form

Please contact the Pipeline Subject Matter Expert at the Shell Manufacturing Centre in Corunna, Tel. (519) 481-1245.

## CALL BEFORE YOU DIG

Damage can occur from conducting ground disturbance activities within proximity of a pipeline without the knowledge or consent of the owner/operator. Striking a pipeline can have severe consequences for the public and the environment. Before starting any ground disturbance work, contact your local One Call centre. The Ontario One Call can be reached by calling 1-800-400-2255.

**Operated by Shell Canada's Sarnia Manufacturing Centre**